

Play The 1st Oboe with the “Philharmonic Wind Orchestra”

Famous Overtures 3

EMR 31039

- 1) Tandredi Overture (Rossini)
- 2) Prince Igor (Borodin)
- 3) Overture Il Seraglio (Mozart)
- 4) Tannhäuser (Wagner)
- 5) Prelude To Werther (Massenet)
- 6) The Messiah (Händel)
- 7) Rigoletto (Verdi)
- 8) Orphée Aux Enfers (Offenbach)

Print & Listen
Drucken & Anhören
Imprimer & Ecouter



www.reift.ch



EDITIONS MARC REIFT

Route du Golf 150 • CH-3963 Crans-Montana (Switzerland)

Tel. +41 (0) 27 483 12 00 • Fax +41 (0) 27 483 42 43 • E-Mail : info@reift.ch • www.reift.ch

DISCOGRAPHY



Famous Overtures 3

Track N°	Titel / Title (Komponist / Composer)	Time	N° EMR Blasorchester Concert Band
1	Tancredi Overture (Rossini)	6'01	EMR 11408
2	Prince Igor (Borodin)	10'25	EMR 11117
3	Overture il Seraglio (Mozart)	5'53	EMR 11488
4	Tannhäuser (Wagner)	14'09	EMR 11487
5	Prelude To Werther (Massenet)	3'39	EMR 11489
6	The Messiah (Händel)	3'40	EMR 11485
7	Rigoletto (Verdi)	2'18	EMR 11484
8	Orphée Aux Enfers (Offenbach)	8'30	EMR 11060

Zu bestellen bei • A commander chez • To be ordered from:

Editions Marc Reift • Route du Golf 150 • CH-3963 Crans-Montana (Switzerland) • Tel. +41 (0) 27 483 12 00 • Fax +41 (0) 27 483 42 43 • E-Mail: info@reift.ch • www.reift.ch

OBOE

Tancredi Overture

Gioacchino Rossini

Arr.: John Glenesk Mortimer

Andante ♩ = 72

~~Photocopying~~
is illegal!

EMR 31039

www.reift.ch

OBOE

Prince Igor

Overture

Alexander Borodin

Arr.: John Glenesk Mortimer

Andante $\text{♩} = 66$ Photocopying
is illegal!

12 9

p cresc. *mf dim.* *p* *p*

33 5 17

mf *f*

68 1

ff *p*

77 5 5 5 5 5

cresc. *f* *dim. 5*

101 6

mf *f*

117

p cresc. *f* *ff*

131 8

f *ff*

151 1

dim.

166 28 12

mf *dim.* *p*

219

p

233

p

OBOE

Overture Il Seraglio

Die Entführung aus dem Serail / L'Enlèvement au Sérail / The Abduction From The Seraglio

Wolfgang Amadeus Mozart

Arr.: John Glenesk Mortimer

Presto ♩ = 138

~~Photocopying is illegal!~~

12 **A** *p* *f* 3

25 *p sub.* 3 *f sub.* 3 **B**

36 *p sub.*

44 **C** 3 *f* *p sub.* 3

59 *f* 8 *f* 3

78 **E** 3 *p* *f*

93 **F** 4 *f* 4

114 **G** *p* *f* *f* *p* *f p* *f p*

129 *p cresc.* *f* 5 1 *p* *f* *p* *f p*

145 **H** *f p*

155 *f* 3

OBOE

Tannhäuser Overture

Richard Wagner

Arr.: Friedrich Szepansky

Andante maestoso

$\text{♩} = 60$

A

Photocopying is illegal!

16 9

32

39

41

43

45

47

49

51

Allegro in 2 $\text{♩} = 80$

59

87

EMR 31039

OBOE

Prelude to *Werther*

Jules Massenet

Arr.: John Glenesk Mortimer

Photocopying is illegal!

Lento ♩ = 56

9 *f* *ff* *p* *f* *rit.* **A** Andante ♩ = 72

26 *ff* *p sub.* *mf* *p sub.* *f* *p* **B**

32 *f* *p* *f* *p* *mf* *rall.* *rit.*

40 **C** Andante ♩ = 66 *p* *pp* *mp* *f* *rit.*

EMR 31039

© COPYRIGHT BY EDITIONS MARC REIFT CH-3963 CRANS-MONTANA
ALL RIGHTS RESERVED - INTERNATIONAL COPYRIGHT

OBOE

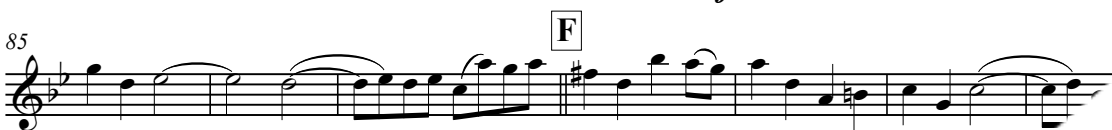
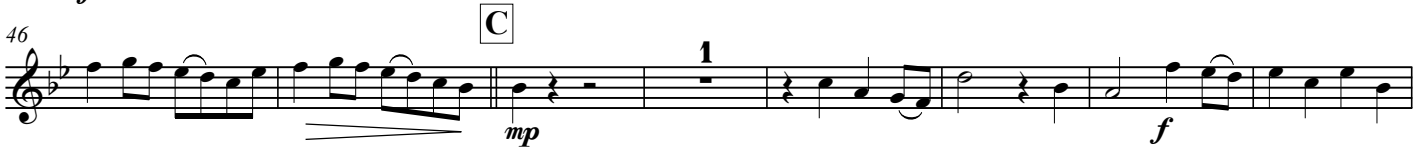
The Messiah

Overture

Georg-Friedrich Händel

Arr.: John Glenesk Mortimer

Grave $\text{♩} = 72$

 Photocopying is illegal!


OBOE

Rigoletto

Preludio

Giuseppe Verdi

Arr.: John Glenesk Mortimer

Andante sostenuto ♩ = 66

Photocopying
is illegal!

14

ff *f* *ff* *f* *ff*

20

23

8

mf *cresc.* *ff*

EMR 31039

© COPYRIGHT BY EDITIONS MARC REIFT CH-3963 CRANS-MONTE
ALL RIGHTS RESERVED - INTERNATIONAL COPYRIGHT

OBOE

Orphée Aux Enfers

Orpheus in der Unterwelt / Orpheus in the Underworld
Overture

Jacques Offenbach

Arr.: Jérôme Naulais

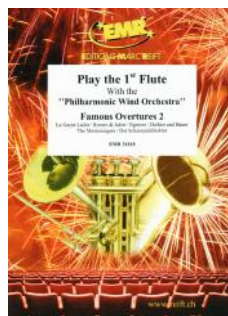
Allegro con fuoco ♩ = 134

~~Photocopying~~
is illegal!

Play The 1st.... With The Wind Orchestra

FAMOUS OVERTURES 2

La Gazza Ladra (Rossini) – Romeo & Juliet (Tchaikovsky) – Egmont (Beethoven) – Dichter und Bauer (Suppé)
The Mastersingers (Wagner) – Der Schauspieldirektor (Mozart)



EMR 31018	Play the 1 st Flute
EMR 31020	Play the 1 st Clarinet
EMR 31019	Play the 1 st Oboe
EMR 31021	Play the 1 st Alto Saxophone
EMR 31022	Play the 1 st Tenor Saxophone
EMR 31023	Play the 1 st Trumpet
EMR 31024	Play the 1 st F Horn
EMR 31025	Play the 1 st Trombone (♭)
EMR 31026	Play the 1 st Baritone (♩)
EMR 31027	Play the Tuba

FAMOUS OVERTURES 3

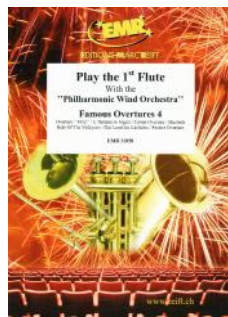
Tancredi Overture (Rossini) – Prince Igor (Borodin) – Overture Il Seraglio (Mozart) – Tannhäuser (Wagner)
Prelude To Werther (Massenet) – The Messiah (Händel) – Rigoletto (Verdi) – Orphée Aux Enfers (Offenbach)



EMR 31038	Play the 1 st Flute
EMR 31040	Play the 1 st Clarinet
EMR 31039	Play the 1 st Oboe
EMR 31041	Play the 1 st Alto Saxophone
EMR 31042	Play the 1 st Tenor Saxophone
EMR 31043	Play the 1 st Trumpet
EMR 31044	Play the 1 st F Horn
EMR 31045	Play the 1 st Trombone (♭)
EMR 31046	Play the 1 st Baritone (♩)
EMR 31047	Play the Tuba

FAMOUS OVERTURES 4

Overture "1812" (Tchaikovsky) – L'Italiana in Algeri (Rossini) – Cuban Overture (Gershwin) – Macbeth (Verdi)
Ride Of The Valkyries (Wagner) – Das Land des Lächelns (Lehár) – Festive Overture (Shostakovich)



EMR 31058	Play the 1 st Flute
EMR 31060	Play the 1 st Clarinet
EMR 31059	Play the 1 st Oboe
EMR 31061	Play the 1 st Alto Saxophone
EMR 31062	Play the 1 st Tenor Saxophone
EMR 31063	Play the 1 st Trumpet
EMR 31064	Play the 1 st F Horn
EMR 31065	Play the 1 st Trombone (♭)
EMR 31066	Play the 1 st Baritone (♩)
EMR 31067	Play the Tuba

FAMOUS OVERTURES 5

Die Schöne Galathée (Suppé) – La Traviata (Verdi) – Don Pasquale (Donizetti) – The Queen Of Spades (Tchaikovsky)
La Vie Parisienne (Offenbach) – Coriolan (Beethoven) – Giselle (Adam) – Norma (Bellini) – An American In Paris (Gershwin)



EMR 31078	Play the 1 st Flute
EMR 31080	Play the 1 st Clarinet
EMR 31079	Play the 1 st Oboe
EMR 31081	Play the 1 st Alto Saxophone
EMR 31082	Play the 1 st Tenor Saxophone
EMR 31083	Play the 1 st Trumpet
EMR 31084	Play the 1 st F Horn
EMR 31085	Play the 1 st Trombone (♭)
EMR 31086	Play the 1 st Baritone (♩)
EMR 31087	Play the Tuba