

20 Greatest Christmas Songs

Volume 1

Baritone & Soprano Recorder
& Piano / Organ

Arr.: Colette Mourey

EMR 24686

VOLUME 1

1. **A Bohemian Christmas Carol** (*Czech Medieval*)
2. **A Child Is Born In Bethlehem** (*Bach*)
3. **Adeste Fideles** (*Traditional*)
4. **Away In A Manger** (*Spillman / Murray*)
5. **Christmas Comes, The Time Of Gladness** (*Händel*)
6. **Christmas Is A Time To Love** (*Mourey*)
7. **Gesù Bambino Nasce** (*Traditional*)
8. **Good King Wenceslas** (*Anonymous*)
9. **Hark! The Herald Angels Sing** (*Mendelssohn*)
10. **Il Est Né Le Divin Enfant** (*Anonymous*)

VOLUME 2

11. **Jingle Bells** (*Traditional*)
12. **Les Anges Dans Nos Campagnes** (*Traditional*)
13. **Noël Nouvelet** (*Traditional*)
14. **O Holy Night** (*Adam*)
15. **O Tannenbaum** (*Traditional*)
16. **Recitativo e Choral** (*Bach*)
17. **Stille Nacht** (*Gruber*)
18. **We Three Kings** (*Hopkins*)
19. **We Wish You A Merry Christmas** (*Traditional*)
20. **What Child Is This?** (*Mourey*)



EDITIONS MARC REIFT

Route du Golf 150 • CH-3963 Crans-Montana (Switzerland)

Tel. +41 (0) 27 483 12 00 • Fax +41 (0) 27 483 42 43 • E-Mail : info@reift.ch • www.reift.ch

1. A Bohemian Christmas Carol

Narodil se Kristus Pan



Czech Medieval

Arr.: Colette Mourey

Andantino maestoso e molto sostenuto ♩ = 92

Baritone

Soprano Recorder

Piano / Organ

Musical score for the first system, measures 1-4. It features three staves: Baritone (bass clef), Soprano Recorder (treble clef), and Piano/Organ (grand staff). The key signature is one sharp (F#) and the time signature is 4/4. The tempo is Andantino maestoso e molto sostenuto with a quarter note equal to 92. Dynamics include *mf* and *mp*. Measure 4 contains a 6/4 time signature change.Musical score for the second system, measures 5-9. It features three staves: Soprano Recorder (treble clef), Piano/Organ (grand staff), and Baritone (bass clef). The key signature is one sharp (F#) and the time signature is 4/4. Dynamics include *f*. Measure 9 contains a 6/4 time signature change.Musical score for the third system, measures 10-13. It features three staves: Baritone (bass clef), Soprano Recorder (treble clef), and Piano/Organ (grand staff). The key signature is one sharp (F#) and the time signature is 4/4. Dynamics include *mf*. The lyrics are: "Christ the Lord is born to - day, Let us sing praise. As the li - lies pure and w'". Measure 13 contains a 6/4 time signature change.

EMR 24686

© COPYRIGHT BY EDITIONS MARC REIFT CH-3963 CRANS-MONTANA (SWITZERLAND)
ALL RIGHTS RESERVED - INTERNATIONAL COPYRIGHT SECURED

www.reift.ch

2. A Child Is Born In Bethlehem

Puer Natus In Bethlehem

after Johann Sebastian Bach

(1685-1750)

Arr.: Colette Mourey



Moderato ♩ = 88

Baritone

Soprano Recorder

Organ /
Piano
optional

4

9



3. Adeste Fideles

Traditional

XIII° siècle

Arr.: Colette Mourey

Maestoso $\text{♩} = 50$

Baritone

Soprano Recorder

Organ /
Piano
optional

5

10

A - des - te fi - de - les, lae - ti tri - um - phan - tes; ve -

15

-ni - te, ve - ni - te in Be - thle - hem:

4. Away In A Manger

J.E. Spillman
(1896)

J.R. Murray
(1905)

W.J. Kirkpatrick
(1921)

Arr.: Colette Mourey



Andante sostenuto ♩ = 72

Baritone

Soprano Recorder

Organ /
Piano
optional

(Spillman)
mf

6

1. A - way in a man - ger, no crib for a bed, The
2. The cat - tle are lo - wing, the ba - by a - wakes, But
3. Be near me, Lord Je - sus, I ask Thee to stay Close

11

lit - tle Lord Je - sus laid down His sweet head. The stars in
lit - tle Lord Je - sus no cry - ing He makes. I love Thee
by me fo - re - ver, and love me, I pray. Bless all th

18 5. Christmas Comes, The Time Of Gladness

after Georg Friedrich Händel
(1685-1759)

Arr.: Colette Mourey


Photocopying
is illegal!

Vivace ♩ = 120

Baritone

Soprano Recorder

Organ / Piano optional

6 *mf*

Christ-mas comes, the time of glad-ness,

11 *mp*

Which our fa - thers gave to mirth; Then no room had they for sad-ness, Jo - yous at the

16 *p*

Sa-viour's birth. Then each home-stead deck'd with hol-ly, Bay, and i - vy leaves

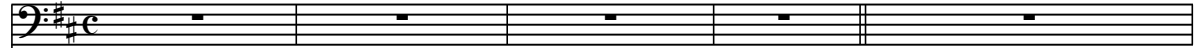
6. Christmas Is A Time To Love

~~Photocopying~~
is illegal!

Arr.: Colette Mourey

Allegro ♩ = 116

Baritone



Soprano Recorder



Organ /
Piano /
optional

6

11

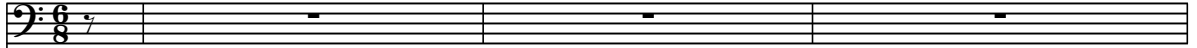
7. Gesù Bambino Nasce



Traditional
Arr.: Colette Mourey

Andantino comodo ♩. = 66

Baritone



Soprano Recorder



Organ /
Piano
optional



4

mp

Ge -
(Da) -

8

-sù Bam - bi - no nas - ce, in tan - ta po - ver - tà,
van - ti/a Te m'in - chi - no, Ti pre - go, o buon Ge - sù,

8. Good King Wenceslas

31



after "Piae Canciones", 1582

Anonymous

Arr.: Colette Mourey

Text : John Mason Neale

Allegro moderato ♩ = 100 (♩ = 200)

Baritone

Soprano Recorder

Organ / Piano / optional

6

mf

1. Good King Wen - ces - las look'd out, On the Feast of Ste - phen.
2. "Hi - ther page and stand by me, If thou know'st it, tel - ling,

11

When the snow lay round a - bout, Deep, and crisp and e - ven: Bri - ghtly shone the
Yon - der pea - sant, who is he? Where and what his dwel - ling?" "Sire, he lives a

16

moon that night, Though the frost was cru - el. When a poor man came
good leaguhence. Un - der - neath the moun - tain; Right a - gainst the fo



9. Hark ! The Herald Angels Sing

after Felix Mendelssohn

(1809-1847)

Arr.: Colette Mourey

Words by Charles Wesley

Maestoso ♩ = 92

Baritone

Soprano Recorder

Organ / Piano optional

mp

6 *mf*

Hark! The he - rald

11

an - gels sing, — "Glo - ry to the new-born King; peace on earth and mer - cy mild, —

mf

16

God and sin - ners re - con-ciled!" Joy - ful, all ye r

10. Il Est Né Le Divin Enfant

 Photocopying
is illegal!

Anonymous
Arr.: Colette Mourey

Moderato $\text{♩} = 50$ ($\text{♩} = 100$)

Baritone

Soprano Recorder

Organ /
Piano
optional

5 *mf*

Il est né le di-vin En - fant: Jou - ez haut bois, ré-son-nez mu - set-tes! Il est né le di-vin En -

11

fant: Chan-tons tous son a - vè - ne - ment! 1.De-puis plus de qua-tre mill' ans, Nous le
2.Ah! Qu'il est beau,qu'il est char - mant! Ah! Que

16

pro - met-taient les pro - phè - tes, De - puis plus de qua-tre mill' ans, Nous at - ten - d'
ses grâ - ces sont par - fai - tes! Ah! Qu'il est beauqu'il est char - mant! Qu'il est dou-



FEMALE CHORUS & WIND BAND

EMR 1358F BACH, Johann S. Chorale "Singet ein neues Lied"

ORCHESTRA, MIXED CHOIR (6 SOLISTS) & ORGAN

EMR 14272 MOUREY, Colette Officium Pro Defunctis

ORCHESTRA, MIXED CHOIR (12 SOLISTS)

EMR 14598 MOUREY, Colette Magnificat

ORCHESTRA & CHORUS

EMR 14471 MOUREY, Colette Cantata

VOICE**VOICE & PIANO**

EMR 13211 BARATTO, Paolo 3 Kleine Liebeslieder
 EMR 13018 BARATTO, Paolo 4 Kinderlieder
 EMR 13034 BARATTO, Paolo Der Minnesänger
 EMR 13034 BARATTO, Paolo Le Troubadour
 EMR 13034 BARATTO, Paolo The Troubadour
 EMR 13408 BARCLAY, Ted (Arr.) Amazing Grace (5)
 EMR 13408 BARCLAY, Ted (Arr.) Auld Lang Syne (5)
 EMR 13409 BARCLAY, Ted (Arr.) Aura Lee (5)
 EMR 13408 BARCLAY, Ted (Arr.) Cielito Lindo (5)
 EMR 13412 BARCLAY, Ted (Arr.) Clementine (5)
 EMR 13408 BARCLAY, Ted (Arr.) Funiculi-Funicula (5)
 EMR 13409 BARCLAY, Ted (Arr.) Glory Hallelujah (5)
 EMR 13409 BARCLAY, Ted (Arr.) Go Down, Moses (5)
 EMR 13408 BARCLAY, Ted (Arr.) Greatest Vocal Hits Volume 1 (5)
 EMR 13409 BARCLAY, Ted (Arr.) Greatest Vocal Hits Volume 2 (5)
 EMR 13410 BARCLAY, Ted (Arr.) Greatest Vocal Hits Volume 3 (5)
 EMR 13411 BARCLAY, Ted (Arr.) Greatest Vocal Hits Volume 4 (5)
 EMR 13412 BARCLAY, Ted (Arr.) Greatest Vocal Hits Volume 5 (5)
 EMR 13411 BARCLAY, Ted (Arr.) Greensleeves (5)
 EMR 13412 BARCLAY, Ted (Arr.) Home On The Range (5)
 EMR 13411 BARCLAY, Ted (Arr.) Kumbaya (5)
 EMR 13408 BARCLAY, Ted (Arr.) La Cucaracha (5)
 EMR 13412 BARCLAY, Ted (Arr.) Little Brown Jug (5)
 EMR 13410 BARCLAY, Ted (Arr.) Londonderry Air (5)
 EMR 13411 BARCLAY, Ted (Arr.) Morning Has Broken (5)
 EMR 13409 BARCLAY, Ted (Arr.) Oh Happy Day (5)
 EMR 13411 BARCLAY, Ted (Arr.) Oh Susanna (5)
 EMR 13410 BARCLAY, Ted (Arr.) Oh When The Saints (5)
 EMR 13409 BARCLAY, Ted (Arr.) Red River Valley (5)
 EMR 13410 BARCLAY, Ted (Arr.) Scarborough Fair (5)
 EMR 13412 BARCLAY, Ted (Arr.) Shenandoah (5)
 EMR 13412 BARCLAY, Ted (Arr.) Swing Low (5)
 EMR 13410 BARCLAY, Ted (Arr.) The House Of The Rising Sun (5)
 EMR 13410 BARCLAY, Ted (Arr.) The Rivers Of Babylon (5)
 EMR 13411 BARCLAY, Ted (Arr.) Yankee Doodle (5)
 EMR 14611 MOUREY, Colette Fragment
 EMR 14613 MOUREY, Colette Ich lebe mein Leben
 EMR 18470 MOUREY, Colette L'Aube d'Eté
 EMR 18407 MOUREY, Colette Mai
 EMR 18380 MOUREY, Colette Maman me chante...
 EMR 18511 MOUREY, Colette Maman me chante...
 EMR 18387 MOUREY, Colette Pregiera Semplice
 EMR 14612 MOUREY, Colette Soleils Couchants
 EMR 14214 MOUREY, Sophie Automne Malade
 EMR 14302 MOUREY, Sophie L'Invitation au Voyage
 EMR 14166 MOUREY, Sophie La Mort des Amants
 EMR 18009 MOUREY, Sophie Le Poison
 EMR 18457 MOUREY, Sophie Tristesse de la Lune
 EMR 13758 ROCHA, Gilles Ave Maria
 EMR 18428 VERGERE, Cédric Ave maria
 EMR 18428 VERGERE, Cédric Conte de ta Vie
 EMR 18428 VERGERE, Cédric La Blatte et le Chocolat

VOICE & CD PLAYBACK

EMR 13408 BARCLAY, Ted (Arr.) Amazing Grace + CD (5)
 EMR 13408 BARCLAY, Ted (Arr.) Auld Lang Syne + CD (5)
 EMR 13409 BARCLAY, Ted (Arr.) Aura Lee + CD (5)
 EMR 13408 BARCLAY, Ted (Arr.) Cielito Lindo + CD (5)
 EMR 13412 BARCLAY, Ted (Arr.) Clementine + CD (5)
 EMR 13408 BARCLAY, Ted (Arr.) Funiculi-Funicula + CD (5)
 EMR 13409 BARCLAY, Ted (Arr.) Glory Hallelujah + CD (5)
 EMR 13409 BARCLAY, Ted (Arr.) Go Down, Moses + CD (5)
 EMR 13408 BARCLAY, Ted (Arr.) Greatest Vocal Hits Volume 1 + CD (5)
 EMR 13409 BARCLAY, Ted (Arr.) Greatest Vocal Hits Volume 2 + CD (5)
 EMR 13410 BARCLAY, Ted (Arr.) Greatest Vocal Hits Volume 3 + CD (5)
 EMR 13411 BARCLAY, Ted (Arr.) Greatest Vocal Hits Volume 4 + CD (5)
 EMR 13412 BARCLAY, Ted (Arr.) Greatest Vocal Hits Volume 5 + CD (5)
 EMR 13411 BARCLAY, Ted (Arr.) Greensleeves + CD (5)
 EMR 13412 BARCLAY, Ted (Arr.) Home On The Range + CD (5)
 EMR 13411 BARCLAY, Ted (Arr.) Kumbaya + CD (5)
 EMR 13408 BARCLAY, Ted (Arr.) La Cucaracha + CD (5)
 EMR 13412 BARCLAY, Ted (Arr.) Little Brown Jug (5)
 EMR 13410 BARCLAY, Ted (Arr.) Londonderry Air + CD (5)
 EMR 13411 BARCLAY, Ted (Arr.) Morning Has Broken + CD (5)
 EMR 13409 BARCLAY, Ted (Arr.) Oh Happy Day + CD (5)
 EMR 13411 BARCLAY, Ted (Arr.) Oh Susanna + CD (5)
 EMR 13410 BARCLAY, Ted (Arr.) Oh When The Saints + CD (5)
 EMR 13409 BARCLAY, Ted (Arr.) Red River Valley + CD (5)
 EMR 13410 BARCLAY, Ted (Arr.) Scarborough Fair + CD (5)
 EMR 13412 BARCLAY, Ted (Arr.) Shenandoah + CD (5)
 EMR 13412 BARCLAY, Ted (Arr.) Swing Low + CD (5)
 EMR 13410 BARCLAY, Ted (Arr.) The House Of The... + CD (5)
 EMR 13410 BARCLAY, Ted (Arr.) The Rivers Of Babylon + CD (5)
 EMR 13411 BARCLAY, Ted (Arr.) Yankee Doodle + CD (5)

VOICE & BRASS BAND

EMR 3714 ANDERSSON / ULVAEUS Super Trouper
 EMR 2569 BRAMER / CASUCCI Just A Gigolo (Male Vocal)
 EMR 3661 CREWE / GAUDIO Can't Take My Eyes Off You
 EMR 2768 GILLES Les Trois Cloches
 EMR 1281 HERMAN, Jerry Hello, Dolly! (medium)
 EMR 2502 KAEMPFERT, Bert Strangers in the Night (Male Vocal)
 EMR 3680V KANDER / EBB New York, New York
 EMR 2525 MORRIS, Albert Feelings (medium - high)
 EMR 3676V NAULAIS, Jérôme (Arr.) Cielito Lindo
 EMR 2674V NORTH / ZARET Unchained Melody (Ghost)
 EMR 3663 PARSON, Ted Everytime I Feel The Spirit
 EMR 3951 PARSON, Ted Let My People Go
 EMR 3717 PARSON, Ted O Happy Day
 EMR 3665 PARSON, Ted Swing Low
 EMR 9031 PARSON, Ted Wade In The Water
 EMR 2572 PARTON, Dolly I Will Always Love You (low)
 EMR 3015 PLAMONDON / COCCIANTE Ave Maria Païen (Solo Voice)
 EMR 2755V POURCEL / PLANTE I Will Follow Him (Sister Act)
 EMR 1196 PREVERT / KOSMA Les Feuilles Mortes (medium - low)
 EMR 2583 RICHARDS, Scott Gloryland
 EMR 3017 THIELE / WEISS What A Wonderful World
 EMR 2600 WEBBER, Andrew L. Don't cry for me (medium - low)
 EMR 2546 WEBBER, Andrew L. Don't Cry For Me, Argentina
 EMR 3883 WEBBER, Andrew L. Memory
 EMR 3025 WEILL / BRECHT Mack The Knife
 EMR 3025 WEILL / BRECHT Mackie Messer

VOICE DUET & BRASS BAND

EMR 3305 MOZART, W.A. Mozart Medley (Mezzo-Soprano & Baritone)

VOICE & WIND BAND

EMR 11040 BACH / GOUNOD Ave Maria
 EMR 10931 BELLINI, Joe (Arr.) Tom Dooley
 EMR 1745 BRAMER / CASUCCI Just A Gigolo (Male Vocal)
 EMR 11204 CACCINI, Giulio Ave Maria
 EMR 11003S CAPDEVILLE, Jean-P. Spente Le Stelle
 EMR 10968 CREWE / GAUDIO Can't Take My Eyes Off You
 EMR 11013S EBB / KANDER Cabaret
 EMR 10497 FRANCK, César Panis Angelicus
 EMR 11016 FRANCK, César Panis Angelicus
 EMR 10969 FRANKLIN / WHITE The Blues Brothers (Think)
 EMR 10969 FRANKLIN / WHITE Think (From "The Blues Brothers")
 EMR 10969 FRANKLIN / WHITE Think (Solo Voice)
 EMR 10460 GIORDANI, Giuseppe Caro Mio Ben
 EMR 10984 HÄNDEL, Georg Fr. Largo from Xerxes
 EMR 1280 HERMAN, Jerry Hello, Dolly!
 EMR 1519 KAEMPFERT, Bert Strangers in the Night
 EMR 10799 KANDER / EBB New York, New York
 EMR 10858 LUTHER, Martin A Mighty Fortress Is Our God
 EMR 10858 LUTHER, Martin C'est un rempart que notre Dieu

